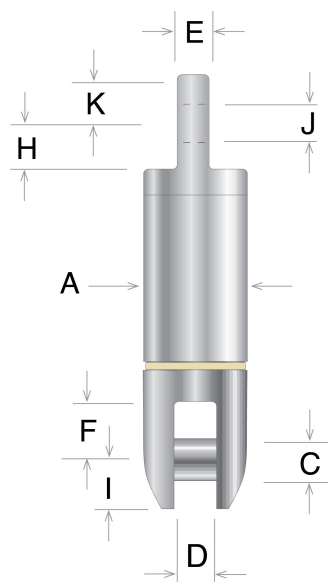




Eye & Clevis Pressure Compensated Swivel - Model SSP-65



Electroline's Model SSP-65 industrial swivel is designed for sub-surface (below water) marine applications. It features an eye-end fitting and a clevis (fork/jaw) fitting. Constructed from stainless steel, the oil-filled housing is sealed and pressure compensated to prevent water entry.

- Angular contact bearings support higher rotational speeds and longer rope lengths.
- Tapered ends are designed to prevent snags on other equipment or cables.
- Ultimate strength exceeds the rated Safe Working Load (SWL).
- Note: Model SSP-65 is a reversed design of the [Model SSP-68 Clevis/Eye Swivel](#).

Specifications

| | |
|---------------------------|-----------------|
| Material | Stainless Steel |
| Termination Type | Clevis, Eye |
| Connector Type | Clevis, Eye |
| Water Pressure Resistance | High |

Available Products

| Part No. | SWL Pounds (5:1) | SWL Pounds (3:1) | Dim A | Dim C - Pin Dia. | Dim D | Dim E | Dim F | Dim H | Dim I | Dim J - Hole Dia. | Dim K | Overall Length |
|----------|------------------|------------------|--------|------------------|--------|-------|--------|---------|-------|-------------------|---------|----------------|
| SSP-6525 | 900 | 1500 | 1-1/4 | 3/8 | 19/32 | 5/16 | 11/16 | 1/2 | 7/16 | 3/8 | 7/16 | 5 |
| SSP-6537 | 1800 | 3000 | 1-1/2 | 7/16 | 19/32 | 1/2 | 13/16 | 23/32 | 9/16 | 5/8 | 5/8 | 5-5/8 |
| SSP-6550 | 3600 | 6000 | 1-7/8 | 5/8 | 3/4 | 3/4 | 15/16 | 15/16 | 13/16 | 7/8 | 15/16 | 7-3/4 |
| SSP-6562 | 6000 | 10000 | 2-7/16 | 7/8 | 1 | 1 | 1-9/16 | 1-5/16 | 1-1/8 | 1-1/4 | 1-3/16 | 11-3/8 |
| SSP-6575 | 9600 | 16000 | 3-1/4 | 1-1/8 | 1-9/16 | 1-1/4 | 2-1/8 | 1-5/8 | 1-1/4 | 1-3/8 | 1-1/2 | 13-7/16 |
| SSP-6587 | 12000 | 20000 | 3-5/8 | 1-1/2 | 1-3/4 | 1-1/2 | 3-1/2 | 2-27/32 | 1-3/4 | 1-1/2 | 1-13/16 | 17-1/2 |
| SSP-6599 | 16800 | 28000 | 3-5/8 | 1-1/2 | 1-3/4 | 2 | 3-1/2 | 2-25/32 | 1-3/4 | 2 | 2-1/8 | 18-7/8 |