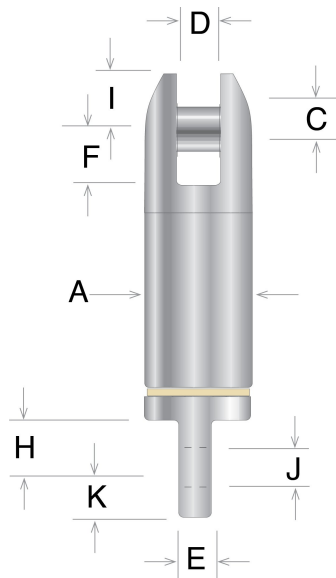




Clevis & Eye Pressure Compensated Swivel - Model SSP-68



Electroline's Model SSP-68 industrial swivel is designed for sub-surface marine applications and features a clevis (fork/jaw) fitting with a pin and an eye-end fitting. Constructed from stainless steel, the oil-filled housing is sealed and pressure compensated to prevent water entry.

- Angular contact bearings support higher rotational speeds and longer rope lengths.
- Tapered ends are designed to prevent snags on other equipment or cables.
- Ultimate strength exceeds the rated Safe Working Load (SWL).
- Note: Model SSP-68 is a reversed design of the [Model SSP-65 Clevis/Eye Swivel](#).

Specifications

Material	Stainless Steel
Termination Type	Clevis, Eye
Connector Type	Clevis, Eye
Water Pressure Resistance	High

Available Products

Part No.	SWL Pounds (5:1)	SWL Pounds (3:1)	Dim A	Dim C - Pin Dia.	Dim D	Dim E	Dim F	Dim H	Dim I	Dim J - Hole Dia.	Dim K	Overall Length
SSP-6825	900	1500	1-1/4	3/8	19/32	5/16	11/16	1/2	7/16	3/8	7/16	5
SSP-6837	1800	3000	1-1/2	7/16	19/32	1/2	13/16	23/32	9/16	5/8	5/8	5-5/8
SSP-6850	3600	6000	1-7/8	5/8	3/4	3/4	15/16	15/16	13/16	7/8	15/16	7-3/4
SSP-6862	6000	10000	2-7/16	7/8	1	1	1-9/16	1-5/16	1-1/8	1-1/4	1-3/16	11-3/8
SSP-6875	9600	16000	3-1/4	1-1/8	1-9/16	1-1/4	2-1/8	1-5/8	1-1/4	1-3/8	1-1/2	13-7/16
SSP-6887	12000	20000	3-5/8	1-1/2	1-3/4	1-1/2	3-1/2	2-27/32	1-3/4	1-1/2	1-13/16	17-1/2
SSP-6899	16800	28000	3-5/8	1-1/2	1-3/4	2	3-1/2	2-25/32	1-3/4	2	2-1/8	18-7/8