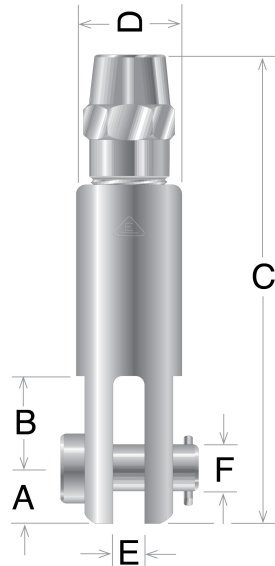




Machined Clevis Socket Fitting for Kernmantle Rope



Electroline synthetic rope fittings for Kernmantle rope are supplied with the SAR1000 series internal plug. The sleeve has no exposed thread when assembled and is retained in the socket with a set screw. This fitting features a clevis (fork/jaw) with an included pin. The swagless termination allows it to be installed in the field without special tools or processes.

- Available for ropes 3/8 to 5/8 in diameter.
- Machined from aluminum to provide lightweight strength.

Specifications

Termination Type Swageless

Connector Type	Clevis
----------------	--------

Material	Aluminum
----------	----------

Available Products

Rope Size (In)	Part No.	Dim A	Dim B	Dim C	Dim D	Dim E	Dim F
3/8	YAR-143	5/8	1	5-13/16	1-1/4	7/16	1/2
7/16	YAR-143	5/8	1	5-13/16	1-1/4	7/16	1/2
1/2	YAR-150	23/32	1-1/4	6-1/2	1-3/8	1/2	5/8
5/8	YAR-162	51/64	1-3/8	7-1/8	1-1/2	5/8	11/16