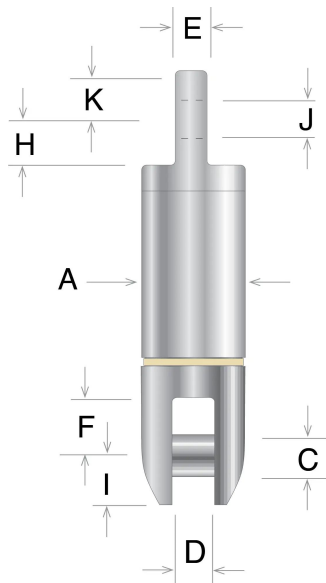




## Model SS-65 - Eye/Clevis Sealed Swivel



- Angular contact bearings provide higher-speed, low-torque rotation for longer rope lengths.
- Tapered ends are designed to prevent snags on other equipment or cables.
- Ultimate strength exceeds the rated Safe Working Load (SWL).
- Note: Model SS-65 is a reversed design of the [Model SS-68 Eye/Clevis Swivel](#).

Material	Stainless Steel
Termination Type	Clevis, Eye
Connector Type	Clevis, Eye
Water Pressure Resistance	Moderate

Part No.	SWL Pounds (3:1)	SWL Pounds (5:1)	Dim A	Dim C - Pin Dia.	Dim D	Dim E	Dim F	Dim H	Dim I	Dim J - Hole Dia.	Dim K	Overall Length
SS-6525	2500	1500	1-1/4	3/8	19/32	5/16	11/16	1/2	7/16	3/8	7/16	5
SS-6537	5000	3000	1-1/2	7/16	19/32	1/2	13/16	23/32	9/16	5/8	5/8	5-7/8
SS-6550	10000	6000	1-7/8	5/8	3/4	3/4	15/16	15/16	13/16	7/8	15/16	7-1/2
SS-6562	16666	10000	2-7/16	7/8	1	1	1-9/16	1-5/16	1-1/8	1-1/4	1-3/16	11