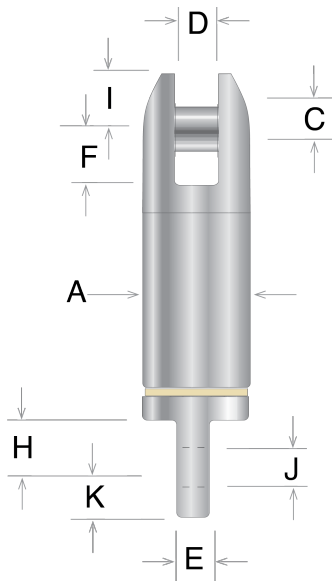




## Model SS-68 - Clevis/Eye Sealed Swivel



Electroline's Model SS-68 industrial swivel is designed for ocean surface (above water) application. It features a clevis (fork/jaw) fitting with a pin and an eye-end fitting. Constructed from stainless steel, the swivel has a grease-filled housing that is sealed to prevent water entry. The angular contact bearings provide higher-speed, low-torque rotation for longer rope lengths.

- The tapered ends are designed to prevent snags on other equipment or cables.
- Ultimate strength exceeds the rated Safe Working Load (SWL).
- Note: Model SS-68 is a reversed design of the [Model SS-65 Clevis/Eye Swivel](#).

## Specifications

Material	Stainless Steel
Termination Type	Clevis, Eye
Connector Type	Clevis, Eye
Water Pressure Resistance	Moderate

## Available Products

Part No.	SWL Pounds (3:1)	SWL Pounds (5:1)	Dim A	Dim C - Pin Dia.	Dim D	Dim E	Dim F	Dim H	Dim I	Dim J - Hole Dia.	Dim K	Overall Length
SS-6825	2500	1500	1-1/4	3/8	19/32	5/16	11/16	1/2	7/16	3/8	7/16	5
SS-6837	5000	3000	1-1/2	7/16	19/32	1/2	13/16	23/32	9/16	5/8	5/8	5-7/8
SS-6850	10000	6000	1-7/8	5/8	3/4	3/4	15/16	15/16	13/16	7/8	15/16	7-1/2
SS-6862	16666	10000	2-7/16	7/8	1	1	1-9/16	1-5/16	1-1/8	1-1/4	1-3/16	11

PDF generated on 2025-04-19 at 14:14 by [electrolineusa.com](https://www.electrolineusa.com). Information is provided for reference only. Please contact Electroline at [info@electrolineusa.com](mailto:info@electrolineusa.com) or 1-800-321-0870 to confirm specifications or discuss customization options.